



# AGPS

## Wiring Quick Guide

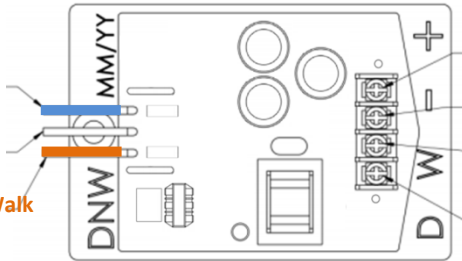
### SPI in the Pedestrian Signal Head (Signal Power Interface)

#### WARNING 120 VAC Inputs

Blue wire to Walk

White wire to Neutral

Orange wire to Don't Walk



#### 12 VDC Outputs

Terminal 4: +12VDC

Terminal 3: -GND

Terminal 2: S2 W (Walk)

Terminal 1: S1 DW (Don't Walk)

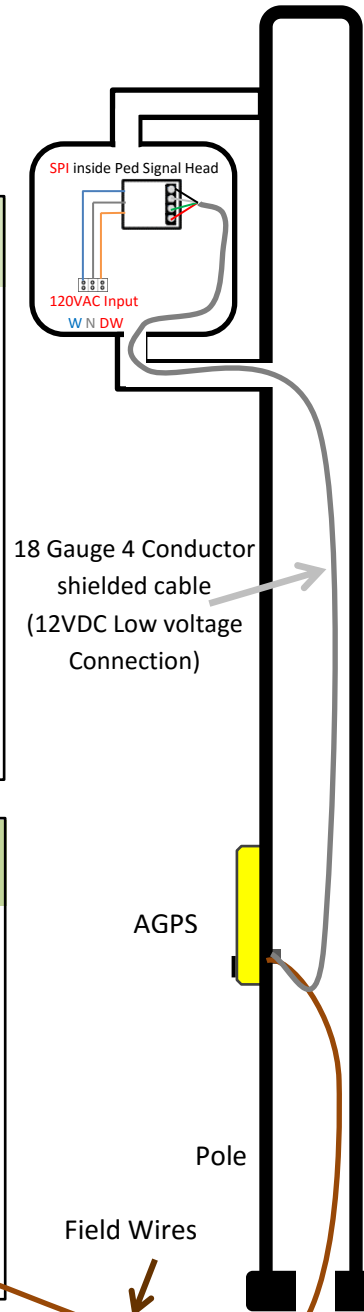
**Do NOT set the SPI** on the bottom of the Pedestrian Signal Head

Terminals of the SPI must be connected to the same terminals on the Base Station

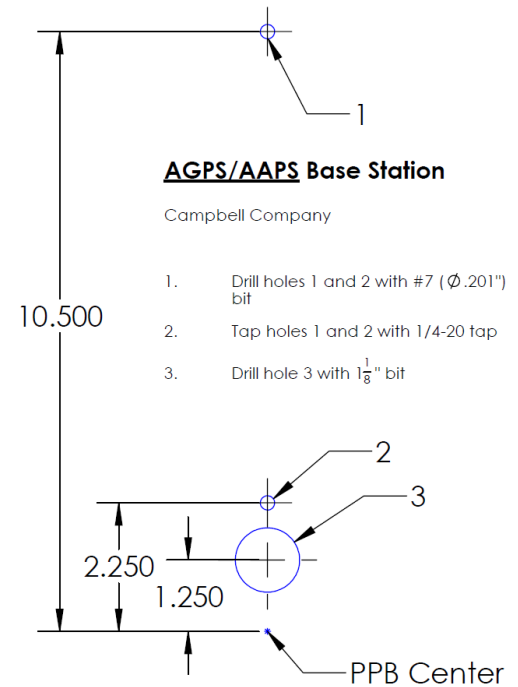
### Cabinet

- ✓ Utilizes the existing Field Wires from cabinet to pedestrian push buttons to place calls
- ✓ NOT polarity dependent

NOTE: For NEW intersection installations, in the absence of city or other local specifications, Campbell Company recommends IMSA 14 Gauge (loop detector wire)



### Mounting AGPS Base Station Dimensions



#### AGPS/AAPS Base Station

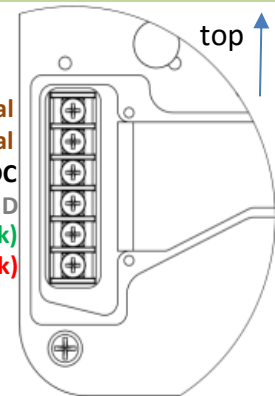
Campbell Company

1. Drill holes 1 and 2 with #7 (Ø.201") bit
2. Tap holes 1 and 2 with 1/4-20 tap
3. Drill hole 3 with 1/8" bit

### AGPS Base Station

(exploded view of terminal block on back)

- (FT) Field Terminal
- (FT) Field Terminal
- Terminal 4: +12VDC
- Terminal 3: -GND
- Terminal 2: S2 W (Walk)
- Terminal 1: S1 DW (Don't Walk)



#### AGPS Wiring Connections 12 VDC

Doc # 906-0020 Rev C