



# Enlightened Interface Module (ENIM) Installation Instructions

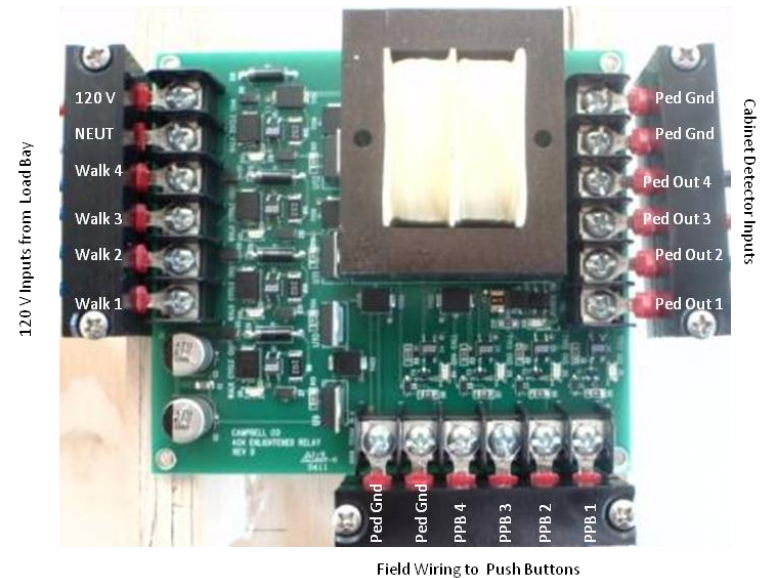
One ENIM Latching LED module services 4 pedestrian phases and up to sixteen push buttons.

## Mounting Instructions:

The ENIM may be mounted on the cabinet rails from either end. One ENIM manages 4 pedestrian phases. The pedestrian phases are identified as 1-4.

## Cabinet Installation:

1. Mount ENIM in the cabinet. Choose a location that will allow easy access to the 120 load bay, pedestrian detector rack, and field pedestrian push button wires.
2. Move the pedestrian field wires from the existing detector rack inputs and reinstall on the ENIM in the Field Wiring to Push Button terminals.
  - Ped Grnd
  - PPB 1-4
3. Install wire connections from the ENIM area identified as Cabinet Detector Inputs to the corresponding terminals in the detector rack.
  - Ped Grnd
  - Ped Out 1-4
4. Install AC line input (120V) and neutral (NEUT) from a power source to terminals in the 120V inputs on the ENIM.
5. Install wire connections from Walk Display 1 -4 in the load bay to Walk 1-4 on the 120V inputs on the ENIM.



Field Wiring to Push Buttons

## Field Installation:

1. Attach Ped Gnd and PPB 1-4 to push buttons in the field.

## Verification:

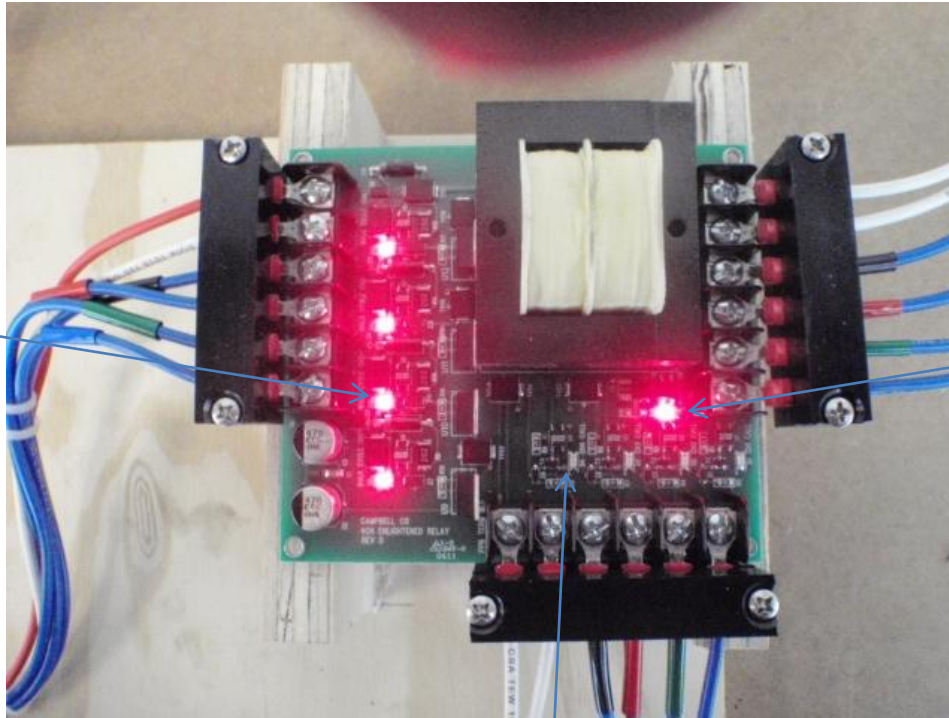
Press the push button. You will get an audible Dee Dah report as well as having the LED latch. All push buttons on that phase will light their LEDs and remain latched on until that Pedestrian Phase is active with the lighted Walk Display.



## Enlightened Interface Module (ENIM) Installation Instructions – Status Indicators

### Walk Display Status:

LEDs D9 – D12 will energize (red) when Walk 1 – 4 is on.



### Power On:

LED D15 will energize (red) when 120 power is applied to the 120V power input.

### Call Placed:

LEDs D1 – D4 will momentarily flash (red) when there is a contact closure at PPB 1 - 4.