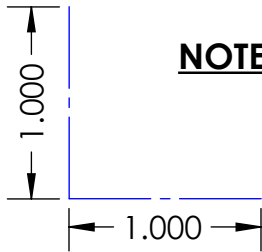
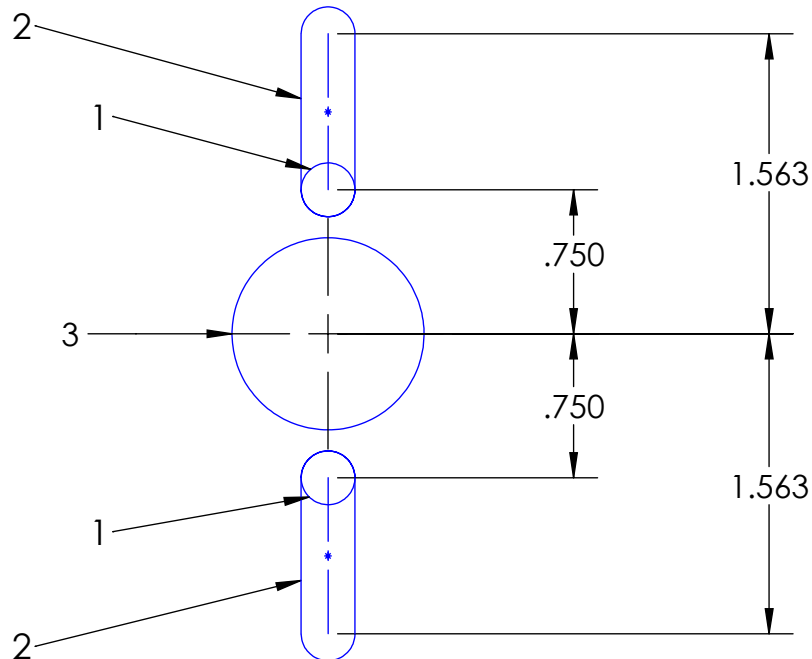


Guardian Mini Mounting Template

Campbell Company



NOTE: Use "Actual Size" setting when printing, then measure 1" lines to the left to verify 1:1 scale.



Instructions:

1. (Optional) Mount Guardian Mini station to 1/4-20 tapped holes left over from existing ADA pushbutton. Typical hole locations are marked "1".
2. If existing holes cannot be used, drill and tap one 1/4-20 mounting hole within each slot outline marked "2".
3. Drill 1" wire chase hole at location marked "3".

