



Advisor Guide Pedestrian Signal (AGPS) 400: Installation instructions

Sequence of Installation:

1. Identify the location of the AGPS Base Station using the intersection Worksheet. (Stations are identified with the Campbell Company work order and station identification number).
2. Place the SPI in the ped head and connect to the Walk / Don't Walk / and Neutral terminations.
3. Make connections at the station for cabinet inputs.
4. Pull 4 conductor cable from station to ped head.
5. Mount the pedestrian Station and place the sign.
6. Make connections for the SPI in the ped head.
7. Test and Adjust.
8. Fax Checklist to Campbell Company



AGPS SPI

Standard Components:

- Base Station 400
 - SPI
- 2 - ¼-20 x 1 " PHP Screws



AGPS 400



Install the SPI in the Ped Head

Placing the Signal Power Interface (SPI)

- Place the SPI in the Ped Head; self adhesive hook and loop fastener is included with the SPI to allow the installer to place the SPI on the back wall of the ped head to provide clearance during installation.
- Attach the 4 conductors from the Base Station to the 4 position barrier terminal on the SPI: (the SPI barrier terminal strip allows for either a tinned lead or a spade lug.)
 - Red to terminal 1: S1 DW Red
 - Green to terminal 2: S2 W Grn
 - White to terminal 3: Neut Wht
 - Black to terminal 4: 12 V DC Blk
- Attach 3 -#16 AWG wires to the 3 position barrier terminal for the visual display
 - Red to DW
 - White to NEUT
 - Blue to Walk





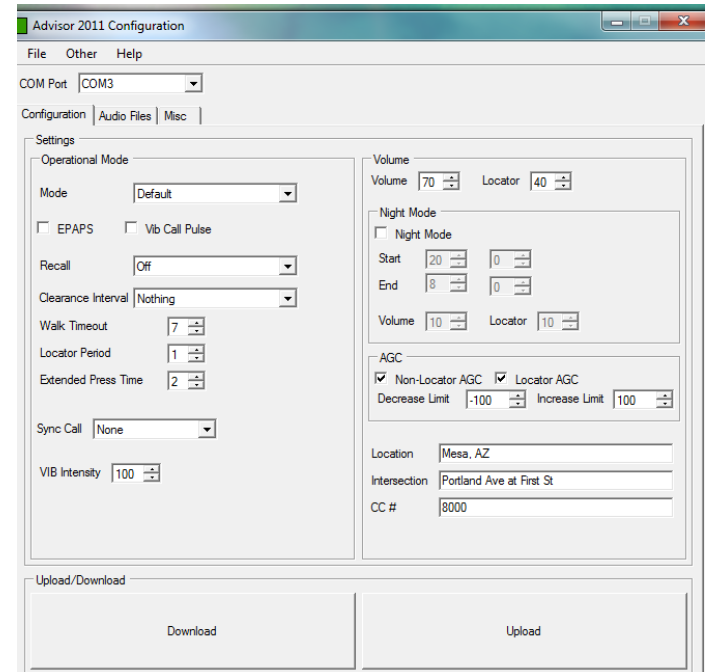
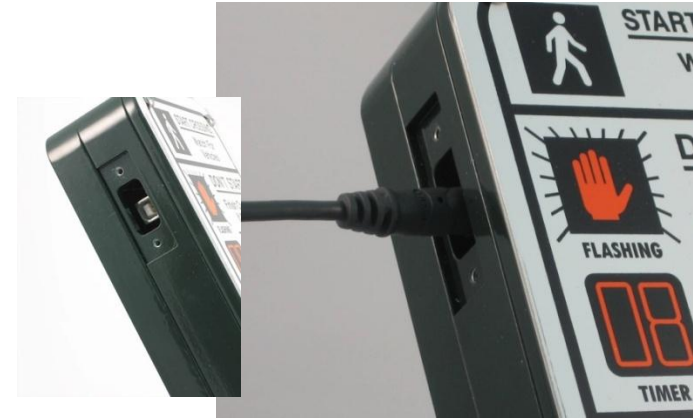
Configuring the Advisor:

WAV Files transfer and adjustments to settings for the Advisor system are performed via a lap top and a USB (printer / B Type) cable.

- Remove USB window on AGPS Base Station.
- Connect the USB from the lap top to the Base Station.
- Start the AGPS Configuration utility.
- Clear the USB Serial #: (Other on tool bar)
- Select COM Port.

AGPS are configured at the factory and should provide a “Plug and Play” installation. The following adjustments allow the factory configuration to be customized and include:

- Operational Mode:
 - OFF—Latching LED only
 - DEFAULT—Full APS Audio functionality
 - EPAPS – Accessible Indications with extended press only.
 - Vib Call Pulse – Haptic feedback at PPB with call
 - Auto Recall – Call placed with each Cycle (no button press necessary)
 - Clearance Interval—Beaconing
 - Walk Timeout—Time in seconds to truncate Walk message
 - Locator Period—Time in seconds Locator message repeats
 - Extended Press Time—Time in seconds to hold button for Location Message
 - Sync Call Functions—Activates buttons on same phase
 - Vib Intensity—Control vibration intensity
 - Volume—Control message audio file volume
 - Locator—Control Locator tone volume
 - Night Mode—Set different Volumes for time of day
 - AGC— Set level of Ambient Gain compensation (2-5 db over ambient)
- DOWNLOAD: Click to see current settings
 UPLOAD: Save the current configuration to the button





WAV File Management

The AGPS utilizes WAV Files for the Audible indications.

WAV files for the various indications are generated and saved to a directory where they can be accessed and attached to the AGPS Base Station:

Select the appropriate file for each indication:

- Locator Tone
- Acknowledgement
- Location Message
- Walk Tone or Message
- Destination Beacon

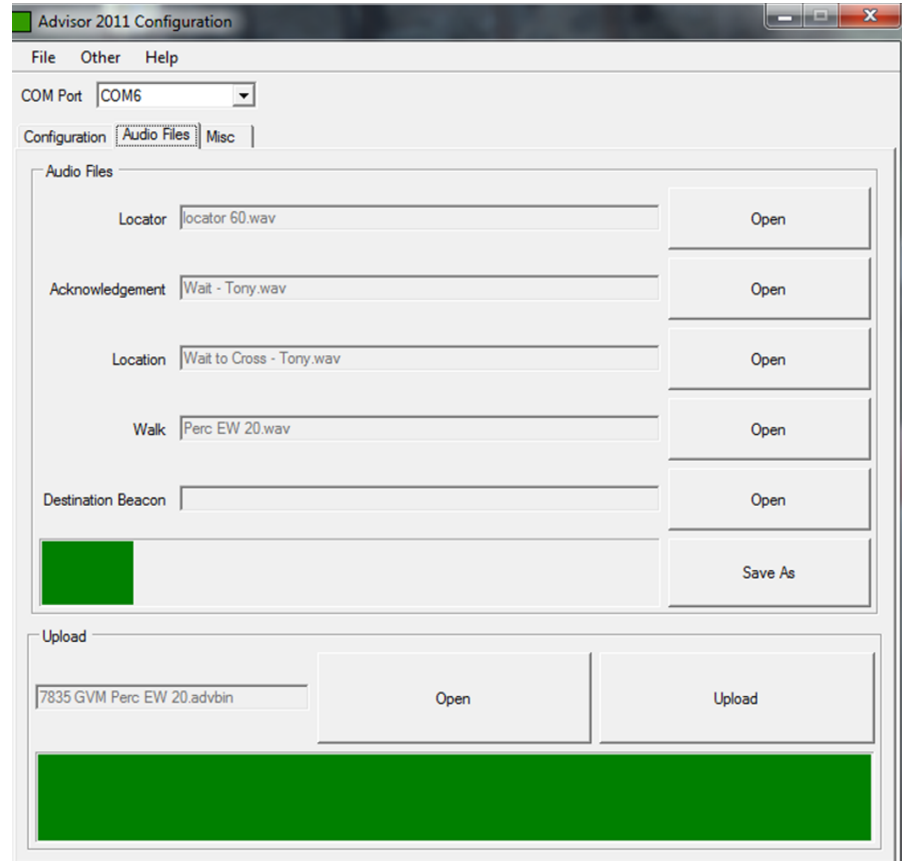
The files you have selected for the specific station are then saved as a template for that station:

- Save as: (example) Main at first Stn 1

Upload the selected Audio Template to the Base Station

- Open Main at first Stn 1.advbin
- Upload

The file upload takes about a minute depending on file size.





Installation Checklist:

Installer: _____ Order Number: _____ Date: _____

Initial:

_____ Base Station is securely attached to the pole (extension bracket) with the arrow pointing to the destination.

_____ Audible “Walk Tone / Message” is present when a call is placed and Walk Sign is on.

_____ Locator Tone is present when “Don’t Walk is on or during “Walk” when no call is placed.

_____ Locator tone is audible 6 to 12 feet or building line which ever is less from ped station.

_____ Messages are audible to a distance of 6 to 12 feet from pedestrian station.

_____ Correct message for the Walk Cycle is present (Percussive Tone / Verbal Message)

_____ Correct message is present for the pedestrian station (verbal message matches location)

_____ LED is lit when call is placed

_____ Vibrotactile arrow is active when call is placed and walk cycle is active

_____ Copy of checklist is faxed to Campbell Company 208-345-7481