



# AGPS

## Wiring Quick Guide

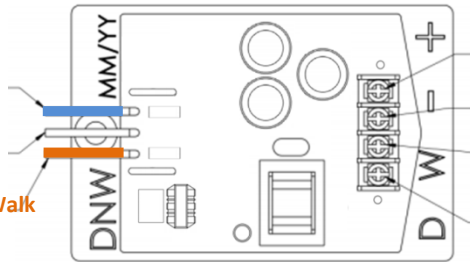
### SPI in the Pedestrian Signal Head (Signal Power Interface)

#### WARNING 120 VAC Inputs

Blue wire to Walk

White wire to Neutral

Orange wire to Don't Walk



#### 12 VDC Outputs

Terminal 4: +12VDC

Terminal 3: -GND

Terminal 2: S2 W (Walk)

Terminal 1: S1 DW (Don't Walk)

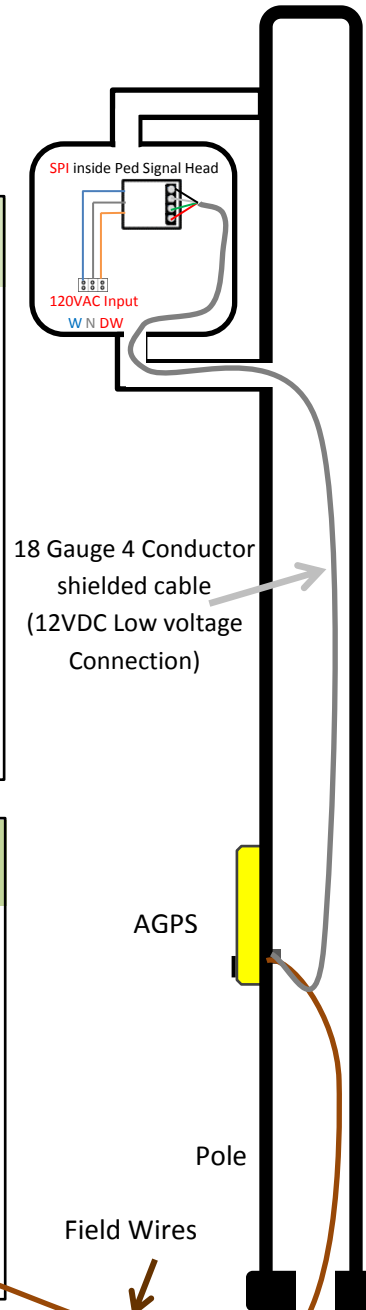
**Do NOT set the SPI** on the bottom of the Pedestrian Signal Head

Terminals of the SPI must be connected to the same terminals on the Base Station

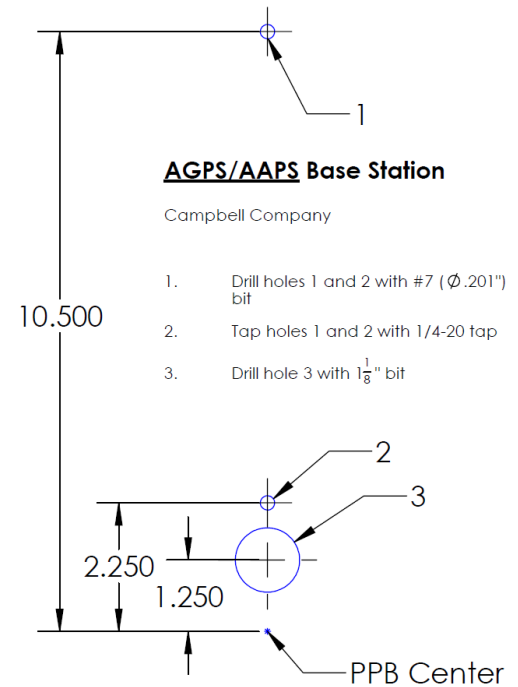
### Cabinet

- ✓ Utilizes the existing Field Wires from cabinet to pedestrian push buttons to place calls
- ✓ NOT polarity dependent

NOTE: For NEW intersection installations, Campbell Company recommends IMSA 14 Gauge (loop detector wire)

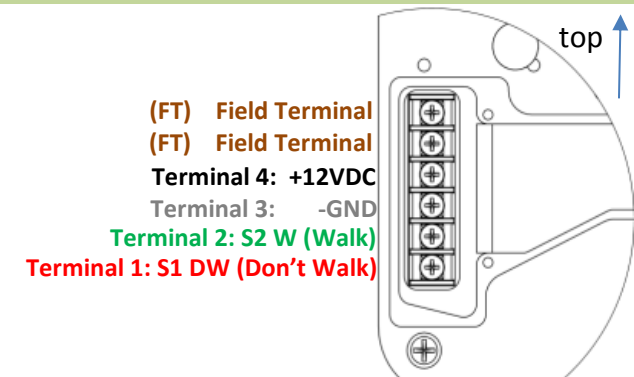


### Mounting AGPS Base Station Dimensions



### AGPS Base Station

(exploded view of terminal block on back)



AGPS Wiring connections 12 VDC

Doc # 906-0020 Rev B